

# Safetred Universal/Universal Plus

## Safety first!

**Safetred Universal** is a tough durable safety flooring for use in any heavy duty application where safety underfoot is a priority, including ramps and wheel chair areas. The selection of 16 fresh shades will complement any interior colour scheme.

## Safetred Universal Plus for more demanding areas

Busy commercial kitchens, food preparation areas and workshops can require a higher level of slip resistance. The answer is **Safetred Universal Plus**, available in 9 popular colours, with the added benefit of an R11 slip resistant rating.

### Features and benefits **R10** Safetred Universal

- > Plain coloured base layer with silicon carbide, granite and flint granules: High performance and aesthetic appeal
- > Superb performance in wet and dry conditions: Provides R10 slip resistance
- > Safety Clean Polyurethane (PUR) surface protection: Provides improved stain resistance for ease of maintenance and reduced cleaning costs
- > Ideal for areas where safety underfoot is required: Schools, hospitals, canteens, laboratories and ramps
- > Manufactured to EN13845: Construction ensures sustainable slip performance throughout product life
- > Product backing made from recycled flooring: Reduced environmental impact

### With Safetred Universal **R11** Plus, also appreciate:

- > Superb performance in wet and dry conditions: Provides R11-slip resistance
- > Heavy duty safety flooring for demanding locations: where toughness and safety are paramount





Quasar

3820 100  
3822 100



Venus

3820 110  
3822 110



Orion

3820 140



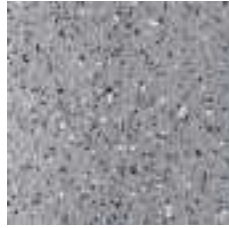
Draco

3820 160



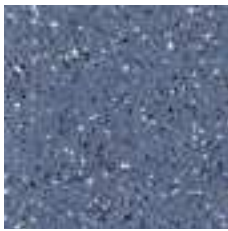
Jupiter

3820 170  
3822 170



Mercury

3820 180  
3822 180



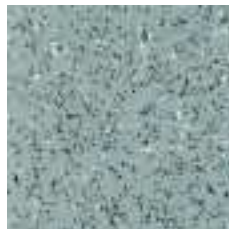
Constellation

3820 190  
3822 190



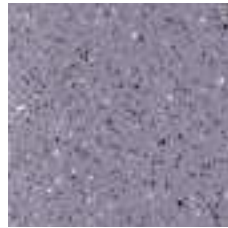
Moon

3820 210  
3822 210



Comet

3820 240



Zodiac

3820 250



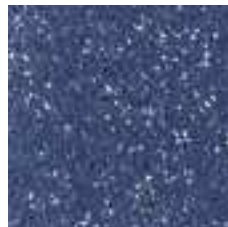
Solar

3820 260



Nebula

3820 270  
3822 270



Pegasus

3820 280  
3822 280



Pulsar

3820 290



Neutron

3820 300  
3822 300

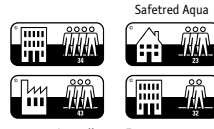
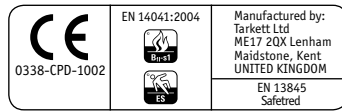


Triton

3820 310

3820 : Safetred Universal  
3822 : Safetred Universal Plus





According to European Classification EN 685

# Safetred Safety Floorings

## DESCRIPTION

Slip resistant heavy duty floorcoverings with Safety Clean PUR reinforcement, in sheet format.  
Product standard: EN 13845.

Technical data	Standards	Safetred Dimension/ Dimension Wood	Safetred Spectrum	Safetred Universal Plus	Safetred Universal	Safetred Aqua
Certification	EN 685 domestic commercial industrial EN 13845	Classes: 34 43 ES <sub>f</sub>	Classes: 34 43 ES <sub>f</sub>	Classes: 34 43 ES <sub>f</sub>	Classes: 34 43 ES <sub>f</sub>	Classes: 23 32 ES <sub>b</sub>
Total thickness	EN 428	2.00 mm	2.00 mm	2.50 mm	2.00 mm	2.00 mm
Total weight	EN 430	3 000 g/m <sup>2</sup> / 3 100 g/m <sup>2</sup>	3 100 g/m <sup>2</sup>	3 850 g/m <sup>2</sup>	3 100 g/m <sup>2</sup>	3 000 g/m <sup>2</sup>
Safety Clean PUR Reinforcement		Yes	Yes	Yes	Yes	Yes
Abrasion	EN 660-2	< 10% particle loss	< 10% particle loss	< 10% particle loss	< 10% particle loss	< 10% particle loss
Static indentation	EN 433	< 0.10 mm	< 0.10 mm	< 0.10 mm	< 0.10 mm	< 0.10 mm
Furniture leg	EN 424	No damage	No damage	No damage	No damage	No damage
Castor chair	EN 425	No damage	No damage	No damage	No damage	No damage
Dimensional stability	EN 434	≤ 0.10%	≤ 0.10%	≤ 0.10%	≤ 0.10%	≤ 0.25%
Curl resultant to heat	EN 434	≤ 3 mm / ≤ 2 mm	≤ 1 mm	≤ 2 mm	≤ 1 mm	≤ 3 mm
Flame and smoke	EN 13501-1 ISO 9239-1 IMO A653	B <sub>f1</sub> s1 with acrylic adhesive on wood > 8 kW/m <sup>2</sup>	B <sub>f1</sub> s1 with acrylic adhesive on wood > 8 kW/m <sup>2</sup>	B <sub>f1</sub> s1 with acrylic adhesive on concrete > 8 kW/m <sup>2</sup>	B <sub>f1</sub> s1 with acrylic adhesive on wood > 8 kW/m <sup>2</sup> Pass	B <sub>f1</sub> s1 with acrylic adhesive on wood > 8 kW/m <sup>2</sup>
Slip resistance	TRRL Pendulum 4S (Wet) DIN 51130 Surface roughness DIN 51097	> 36 R10 > 20 µm	> 36 R10 > 20 µm A	> 45 R11 > 35 µm	> 36 R10 > 20 µm A	> 36 R11 > 30 µm C
Electrical resistance	EN 1815 EN 1081 EN 14041	2 kV on concrete > 10 <sup>10</sup> Ω	2 kV on concrete > 10 <sup>10</sup> Ω	2 kV on concrete Antistatic	2 kV on concrete > 10 <sup>10</sup> Ω	2 kV on concrete > 10 <sup>10</sup> Ω Antistatic
Impact sound reduction	EN ISO 140-8 EN ISO 717/2 ΔL <sub>w</sub>	6 dB / 4 dB	7 dB	6 dB	4 dB	6 dB
Acoustic improvement	NF S 31-074 L <sub>n,e,w</sub>	75 dB / 76 dB	74 dB	74 dB	75 dB	74 dB
Light fastness	EN ISO 105-B02	7	7	7	7	6
Chemical resistance	EN 423	Good resistance to everyday substances				
Anti fungi treatment		Incorporates a biostat to resist fungi and bacterial growth				
Thermal resistance Underfloor heating	EN 12524	0.01 m <sup>2</sup> K/W Suitable	0.01 m <sup>2</sup> K/W Suitable	0.01 m <sup>2</sup> K/W Suitable	0.01 m <sup>2</sup> K/W Suitable	0.01 m <sup>2</sup> K/W Suitable
Colours		Dimension: 16 Dimension Wood: 6	20	9	16	12
Form of delivery	EN 426	Rolls: 20 lm x 2 m		Rolls: 15 lm x 2 m	Rolls: 20 lm x 2 m	

The above information is subject to modification for the benefit of further improvement (05/08).

For more detailed technical information, please contact Tarkett. Follow Tarkett's installation and maintenance instructions carefully. These instructions are available upon request.